

DETAIL - TRACTS C, D & E  
1" = 60'

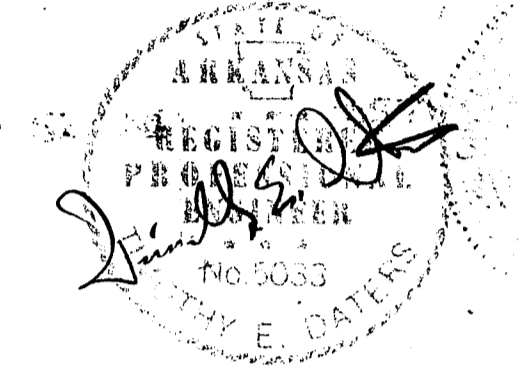
D-94  
90 52924

CERTIFICATE OF SURVEYING ACCURACY  
I, Joe D. White, hereby certify that this plat correctly represents a boundary survey made by me and boundary markers shown hereon actually exist and their location, type and material are correctly shown.  
Date of Execution 8/27/90  
Joe D. White  
Registered Land Surveyor  
No. 534, Arkansas

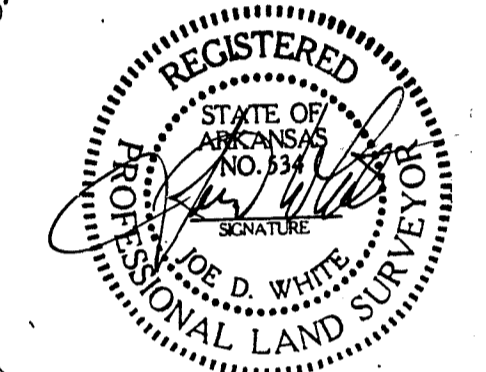
CERTIFICATE OF OWNER  
We, the undersigned, owners of the real estate shown and described herein, do hereby certify that we have laid off, platted, and subdivided, and do hereby lay off, plat, and subdivide said real estate in accordance with this plat.  
Date of Execution 8/27/90  
D.R. 621 Page 233  
Instrument No. \_\_\_\_\_  
Little Rock Club Blvd  
Little Rock, Ark. 72211  
Address

CERTIFICATE OF ENGINEERING ACCURACY  
I, Timothy E. Daters, hereby certify that this plat correctly represents a plan made by me, and that the engineering requirements of the Little Rock Subdivision Rules and Regulations have been complied with.  
Date of Execution 8/27/90  
Timothy E. Daters  
Registered Professional Engineer No. 5033, Arkansas

CERTIFICATE OF FINAL APPROVAL  
Pursuant to the Little Rock Subdivision Rules and Regulations, and all of the conditions of approval having been completed, this document is hereby accepted. This certificate is hereby executed under the authority of said Rules and Regulations.  
Date of Execution August 28, 1990  
Little Rock Planning Commission



CERTIFICATE OF RECORDING  
This document, number 90 52924, filed for record 9-24, 1990, in Plat Book D Page 94.  
Name Delat, D.C.  
JACQUETTA ALEXANDER, Circuit Clerk

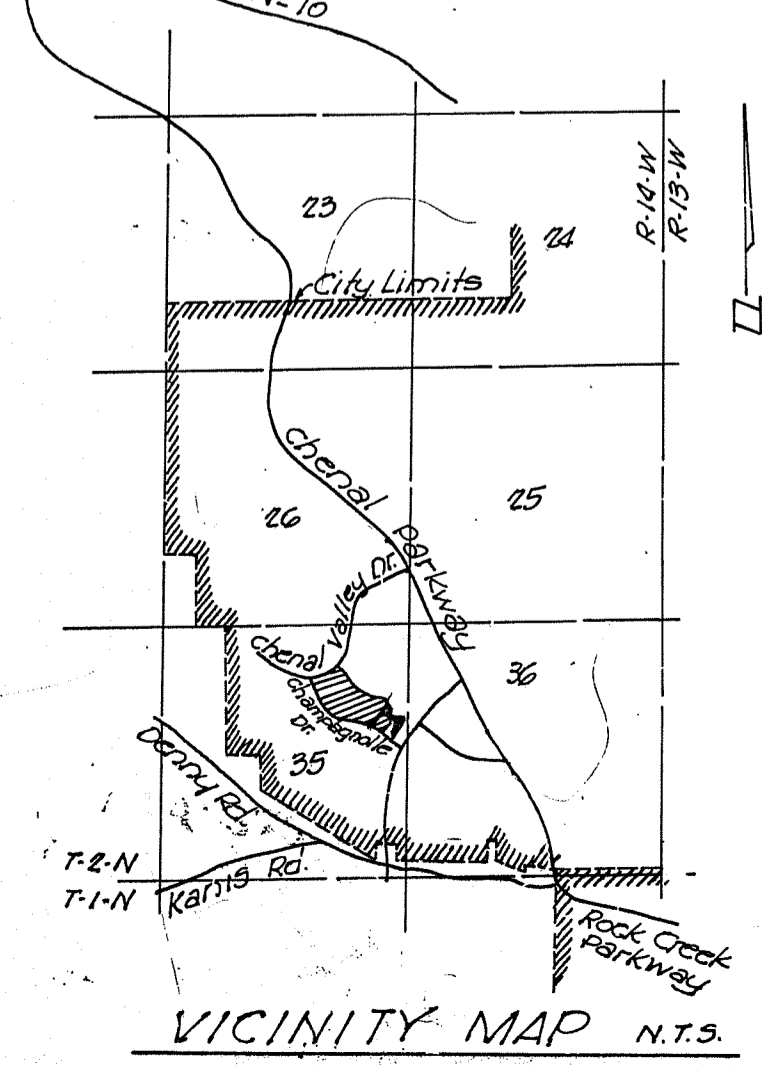


LEGAL DESCRIPTION  
Part of section 35, T-2-N, R-14-W, Pulaski County, Arkansas, more particularly described as: Starting at the center of Section 35, T-2-N, R-14-W; thence S0°45'34"W along the North-South centerline of said Section 35, 1021.60 ft. to a point; thence Northwesterly along the arc of a 2864.79 ft. radius curve to the left, having a chord bearing and distance of N22°55'54"W, 873.62 ft. to a point; thence N31°42'04"W, 1565.59 ft. to a point; thence S58°00'56"W, 333.03 ft. to a point; thence Southwesterly along the arc of a 1432.39 ft. radius curve to the left, having a chord bearing and distance of S32°27'10"W, 1236.23 ft. to a point; thence S6°33'13"W, 389.69 ft. to a point; thence Southerly along the arc of a 2864.79 ft. radius curve to the right, having a chord bearing and distance of S1°06'42"W, 576.67 ft. to a point; thence N86°46'15"W, 280.25 ft. to a point; thence Northwesterly along the arc of a 572.96 ft. radius curve to the right, having a chord bearing and distance of N73°00'38"W, 272.57 ft. to a point; thence N59°15'W, 158.91 ft. to a point; thence Northwesterly along the arc of a 572.96 ft. radius curve to the left, having a chord bearing and distance of N71°07'W, 235.64 ft. to a point; thence N82°59'W, 266.85 ft. to a point; thence Northwesterly along the arc of a 572.96 ft. radius curve to the right, having a chord bearing and distance of N57°05'36"W, 485.01 ft. to a point; thence N32°54'12"W, 286.18 ft. to a point; thence N57°05'48"E, 30.0 ft. to a point on the Easterly right-of-way line of Champagnolle Drive; thence N32°54'12"W along said Easterly right-of-way line, 5.98 ft. to the point of beginning; thence N32°54'12"W and continuing along said Easterly right-of-way line, 153.85 ft. to a point; thence Northwesterly and continuing along said Easterly right-of-way line being the arc of a 984.93 ft. radius curve to the left, having a chord bearing and distance of N50°40'14"W, 601.09 ft. to a point; thence N66°26'14"W and continuing along said Easterly right-of-way line, 640.84 ft. to a point; thence Northwesterly and continuing along said Easterly right-of-way line, being the arc of a 379.26 ft. radius curve to the right, having a chord bearing and distance of N23°58'54"W, 531.23 ft. to a point; thence N20°28'27"E and continuing along said Easterly right-of-way line, 179.11 ft. to a point; thence Northeastly along the arc of a 25 ft. radius curve to the right, having a chord bearing and distance of N65°27'48"E, 35.35 ft. to a point on the Southerly right-of-way line of Chenal Valley Drive; thence Easterly along said Southerly right-of-way line, being the arc of a 746.20 ft. radius curve to the left, having a chord bearing and distance of N82°22'03"E, 697.38 ft. to a point; thence N54°57'55"E and continuing along said Southerly right-of-way line, 32.27 ft. to a point; thence S35°21'40"E, 912.46 ft. to a point; thence S71°41'14"E, 813.34 ft. to a point; thence S40°50'56"W, 390.0 ft. to a point; thence S65°11'04"W, 547.70 ft. to the point of beginning, containing 32.3234 Acres more or less.

CURVE DATA

CURVE NO.	Δ	D	T	L	R
1.	19°30'51"	6°	167.07'	330.79'	
2.	70°39'57"	35°	106.09'	185.96'	
3.	22°43'24"	10°	115.13'	227.23'	
4.	68°08'38"		30.79'	89.20'	75.0'
5.	43°08'29"	46°	49.13'	93.60'	
6.	47°10'36"	10°	250.18'	471.77'	
7.	206°59'26"		187.51'	162.57'	45.0'
8.	58°51'15"		42.31'	77.04'	75.0'
9.	11°01'20"	6°	92.25'	183.90'	
10.	67°45'40"	35°	101.34'	178.45'	
11.	21°26'45"		108.05'	164.04'	100'

- GENERAL NOTES
- Iron Pins Are set At All Lot Corners
  - All Easements shown are to be used for Drainage And/or Utilities, Unless otherwise Noted.
  - Lots With Rounded Corners Are Measured to A Point of Intersection of Lot Lines And Not Points on A Curve.
  - Distances Shown Along Curves Are Chords.
  - Radii At Intersections of Street Rights-of-Way Are 15'.
  - Error of closure: 0.17/5000'
  - Tracts C, D, E to be used for Landscaping Purposes.



Amended 9/21/90 to correct legal description

AMENDED PLAT OF  
LOTS 1-31, BLOCK 5, TRACTS A, B, C, D & E, BLOCK 5, AND LOTS 1-13, BLOCK 6.

**CHENAL VALLEY**  
AN ADDITION TO THE CITY OF LITTLE ROCK, ARKANSAS.

LOCATED IN PART OF SECTION 35, T-2-N, R-14-W PULASKI COUNTY, ARKANSAS.

SCALE: 1" = 100' DATE: JULY 2, 1990  
REV: 9-21-90  
GRAPHIC SCALE IN FEET