

CERTIFICATE OF SURVEYING ACCURACY

I, PAUL M. WHITE, HEREBY CERTIFY THAT THIS PLAT CORRECTLY REPRESENTS A BOUNDARY SURVEY MADE OR VERIFIED BY ME, ALL MONUMENTS REQUIRED ACTUALLY EXIST AND ARE CORRECTLY SHOWN HEREON AND THAT ALL SURVEYING REQUIREMENTS OF THE LITTLE ROCK SUBDIVISION RULES AND REGULATIONS HAVE BEEN COMPLIED WITH.

1/13/05 DATE OF EXECUTION

PAUL M. WHITE REGISTERED LAND SURVEYOR NO. 1281, ARKANSAS

CERTIFICATE OF OWNER

WE, THE UNDERSIGNED, OWNERS OF THE REAL ESTATE, SHOWN AND DESCRIBED HEREIN, DO HEREBY CERTIFY THAT WE HAVE LAID OFF, PLATTED, AND SUBDIVIDED, AND DO HEREBY LAY OFF, PLAT, AND SUBDIVIDE SAID REAL ESTATE IN ACCORDANCE WITH THIS PLAT.

1/13/05 DATE OF EXECUTION DELTIC TIMBER CORPORATION 77 Chenal Club Blvd. Little Rock, Arkansas

D.R. PAGE INSTRUMENT NO. 88-61004

CERTIFICATE OF ENGINEERING ACCURACY

I, TIMOTHY E. DATERS, HEREBY CERTIFY THAT THIS PLAT CORRECTLY REPRESENTS A PLAN MADE BY ME, AND THAT THE ENGINEERING REQUIREMENTS OF THE LITTLE ROCK SUBDIVISION RULES AND REGULATIONS HAVE BEEN COMPLIED WITH.

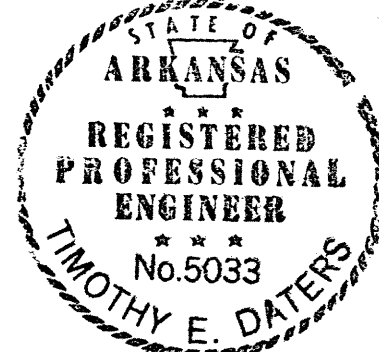
1/13/05 DATE OF EXECUTION

TIMOTHY E. DATERS REGISTERED PROFESSIONAL ENGINEER NO. 5033, ARKANSAS

CERTIFICATE OF FINAL APPROVAL

PURSUANT TO THE LITTLE ROCK SUBDIVISION RULES AND REGULATIONS, AND ALL OF THE CONDITIONS OF APPROVAL HAVING BEEN COMPLETED, THIS DOCUMENT IS HEREBY ACCEPTED. THIS CERTIFICATE IS HEREBY EXECUTED UNDER THE AUTHORITY OF SAID RULES AND REGULATIONS.

1/13/05 DATE OF EXECUTION LITTLE ROCK PLANNING COMMISSION

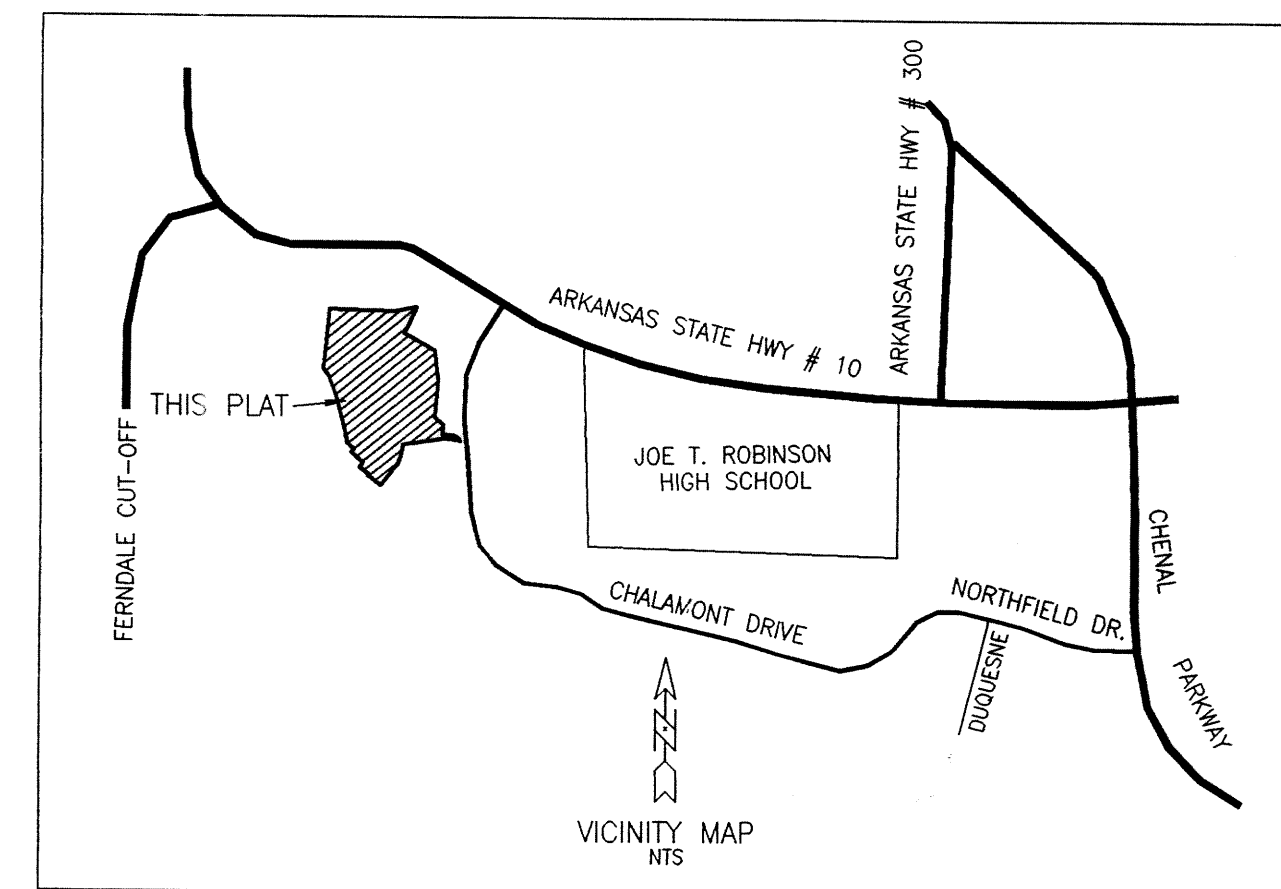


CERTIFICATE OF RECORDING

THIS DOCUMENT, NUMBER 2005004753, FILED FOR RECORD January 13, 2005, IN PLAT BOOK H, PAGE 203.

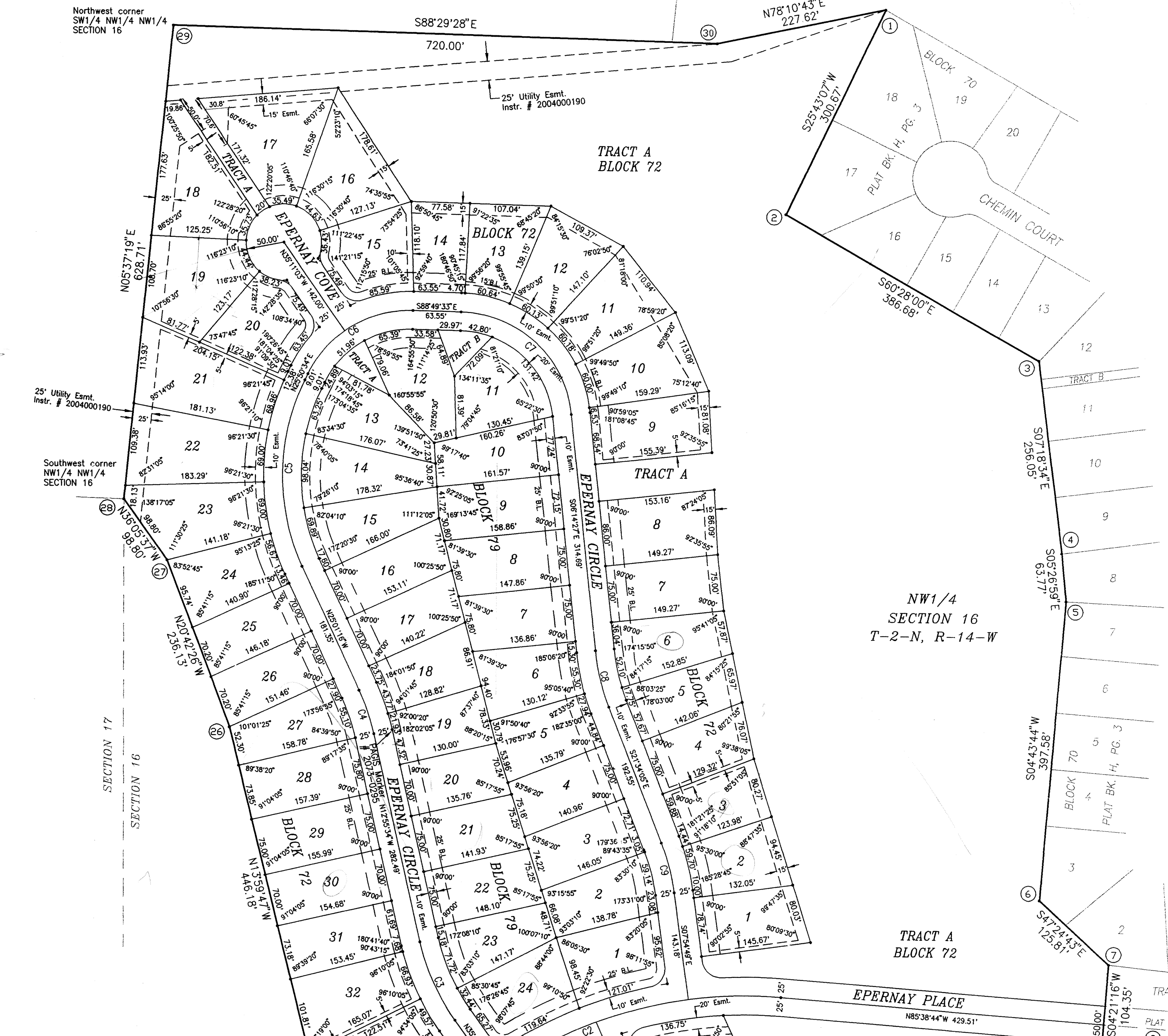
Pat O'Brien Circuit Court Clerk

NO PORTION OF THIS PROPERTY IS WITHIN THE 100 YEAR FLOOD BOUNDARY, AS SHOWN ON THE FLOODWAY, FLOOD BOUNDARY AND FLOOD INSURANCE WORK MAP FOR LITTLE ROCK, ARKANSAS.



GENERAL NOTES:

- 1. 1/2" IRON PINS WERE SET AT ALL LOT CORNERS
2. ALL EASEMENTS SHOWN ARE TO BE USED FOR DRAINAGE AND/OR UTILITIES.
3. LOTS WITH ROUNDED CORNERS ARE MEASURED TO A POINT OF INTERSECTION OF LOT LINES AND NOT POINTS ON A CURVE.
4. DISTANCES SHOWN ALONG CURVES ARE CHORD DISTANCES.
5. ALL FRONT BUILDING SET-BACK LINES ARE 25' UNLESS NOTED OTHERWISE.
6. ERROR OF CLOSURE: EXCEEDS 1:50,000.
7. RADI AT INTERSECTION OF STREET RIGHT-OF-WAYS ARE 25.0', UNLESS NOTED OTHERWISE.
8. ALL TRACTS MAY BE USED AS EASEMENTS DRAINAGE AND/OR UTILITIES. REFER TO BILL OF ASSURANCE FOR RESTRICTIONS ON USE.
9. ALL LOTS HAVE AT LEAST A 10 FT. UTILITY/DRAINAGE ACROSS THE FRONT ADJACENT TO STREET.
10. ALL FRONT BUILDING LINES ARE 25.0 FT. (25'B.L.) EXCEPT LOT 62, BLK. 71 AND LOTS 10, 11, 12 AND 13, BLK. 72 ARE 15.0 FT.



ARKANSAS STATE PLANE COORDINATES (NORTH ZONE)

Table with 3 columns: Lot/Block number, North coordinate, East coordinate. Lists coordinates for lots 1 through 34 and blocks 70, 71, and 72.

CENTERLINE CURVE DATA

Table with 5 columns: Curve ID, Length, Delta, Tangent, Radius. Lists data for curves C1 through C9.

PLAT OF LOTS 58-65 BLOCK 71 LOTS 1-34, BLOCK 72 LOTS 1-4, 10-13, BLOCK 78 LOTS 1-24, BLOCK 79 TRACT A BLOCK 72 TRACT B BLOCK 71 TRACTS A & B BLOCK 79

CHENAL VALLEY

AN ADDITION TO THE CITY OF LITTLE ROCK, ARKANSAS

To be known as "EPERNAY PLACE"

BEING PART OF NW1/4, SECTION 16 T-2-N, R-14-W PULASKI COUNTY, ARKANSAS

JANUARY, 2005